

Useful Websites

www.monsterphonics.com

www.bbc.com
(bitesize KS1 English)

www.spellingshed.com
(password in reading diaries, this includes weekly spellings)

www.topmarks.co.uk
(counting and number bonds)

www.numbots.com
(password in reading diaries)

Homework

Reading Books - We would appreciate you commenting on your child's reading in the diary provided.

Please ensure that your child's reading book is returned to school everyday. If your child is fluent with their book, this will be changed

Library Book - Changed every Thursday. Please keep in the plastic bag provided and return with your reading book.

Spellings-Issued weekly linked to current phonic learning. The children are provided with a paper copy and these are also uploaded to EdShed. Spelling tests are on Thursdays.

Spelling Shed - Log in details can be found in your child's reading diary.

Numbots- Log in details can be found in your child's reading diary.

Science Everyday Materials

The children will identify and name a variety of everyday materials and their properties. They will distinguish between an object and the material from which it is made.

Plants

The children will describe the basic structure of a plant and be able to identify the leaves, stem, roots and petals. They will be able to name common and wild plants. The children will be working scientifically to observe growth and the life cycle of the plant.



Art and Design

The children will be paint woodland animals, closely linked to our theme. They will also find out about the work of Claude Monet and his famous paintings. The children will print curtains for the window that looks out onto his garden. The children will also use clay to create models linked to the 'Wild Things'.



Computing

The children will use programable toys. They will find out about algorithms and apply these to the toys. The children will also apply their new learning using www.beebot.terrapiinlogo.com. You could start practising at home.

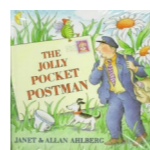


English

The children will be reading and listening to stories linked to our theme 'If you go down in the woods today ...'. Our focus authors will be Anthony Browne and Janet and Allan Ahlberg.



The children will enjoy listening to The Jolly Postman and Anthony Browne stories. They will write poems, newspaper articles and stories. The children will also write recounts based on a planned visit to the local woodland. The children will become confident in applying capital letters, full stops, exclamation marks and question marks.



Important Events (Details to follow)

Visit to Whites Wood and Baggeridge Country Park: 25th June. Please note change of date

Art Day 20th June and Gallery Day 4th July

R.E.

The children will explore belonging and explain where they belong. They will understand that faith makes people feel that they belong.



The children will also explore customs linked to Christianity.

Maths

The children will become confident in recognising, using and applying numbers to 100. They will use these numbers in place value and the four number operations. They will also enjoy focus days, based on measures, money and time.

Please practise counting to 100 and writing numbers to 100 at home.



Geography

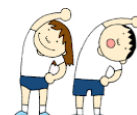
The children will explore the physical and human features of the woodland. They will use directional language to plan a route on a map and visit the local woods.



P.E. Wednesday *Note the change of day*

The children will work on games skills with a focus of using throwing and catching, The children will also work on their athletic skills with a focus on throwing and running. They will be preparing for sports day which will take place in Summer 2.

Children will be outside for P.E unless it is raining. Please ensure that your child is wearing the correct P.E kit on P.E days. Children should wear plain black or blue clothing with their house t-shirt or white a polo t-shirt



With the weather improving, please ensure when it is hot and sunny the children are wearing sun cream and have plenty to drink. Children can wear plain black or blue caps for P.E, Please can we remind you all jewellery should be removed on P.E days - this includes ear rings.



PSHE

The children will focus on the theme 'Healthy and Unhealthy Relationships'. They will learn about respect, ways in which we are the same and different to others, how to play, work co-operatively, talk about and share opinions. They will identify how people may feel if they experience hurtful behaviour or bullying both offline and online.

The children will also be involved in the NSPCC campaign 'PANTS'.



Music

The children will use their bodies and instruments to listen and respond to pieces of classical music that represent animals.

Through fairy tales, the children will be introduced to the concept of timbre; learning that different sounds can represent characters and key moments in a story.

